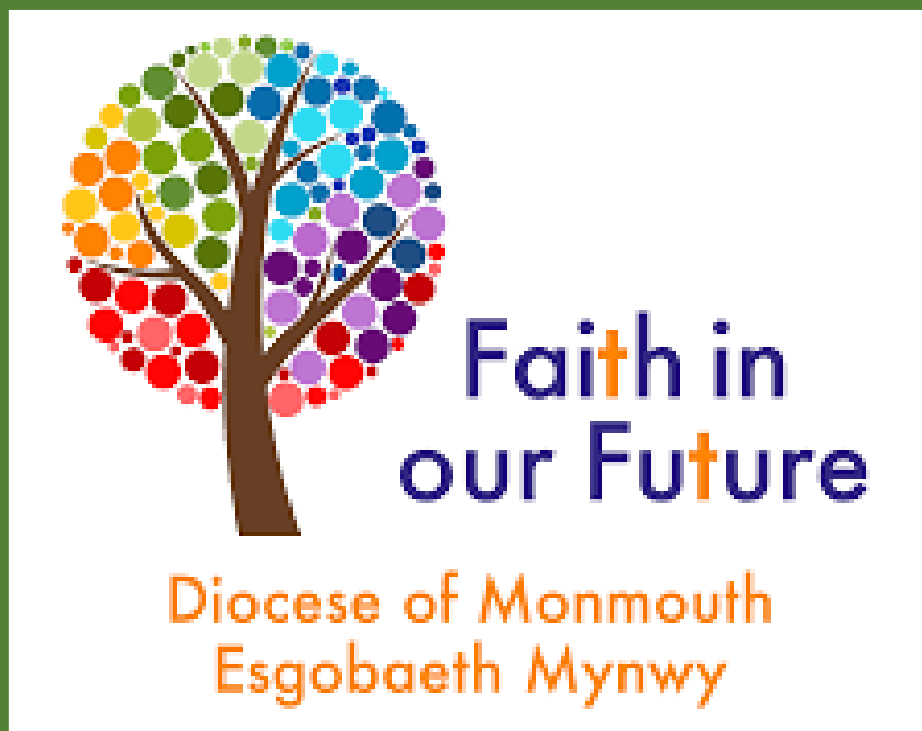


DIOCESE OF MONMOUTH

**HEART OF MONMOUTHSHIRE
MINISTRY AREA**

FULL TIME TEAM VICAR POST





Introduction from the Archdeacon of Monmouth, The Venerable Ian Rees

Thank you for taking the time to look at this profile. We are seeking to appoint a second Team Vicar for the Heart of Monmouthshire Ministry Area based in the beautiful village of Goetre.

This post will offer a role as part of a Ministry Team serving a recently formed Ministry Area. It offers an exciting opportunity to work collaboratively with lay and ordained colleagues.

The Ministry Area is very well served currently by a Rector/Ministry Area Leader a Team Vicar and a Team Curate, another assistant curate (SSM) will be joining in June, and there is also a team of retired priests with permission to officiate and lay ministers. We are building and nurturing collaborative teams that will foster and mature the work already happening in this beautiful part of rural Monmouthshire.

The area has some magnificent buildings and a rich social history which makes this a very attractive place to minister and live. This is an area of great potential and there is a passion to proclaim the Good News in these communities. The people are warm, welcoming, and have a genuine desire to grow the Kingdom of God.

For an informal conversation or further information please contact the Ministry Area Leader, The Rev'd Kevin Hasler on 078 3679 5753 or kevinhasler@cinw.org.uk.

With my best wishes

Ian Rees

Archdeacon of Monmouth



We hope for a Priest who will be:

- **Caring** - has a strong pastoral heart and passion for encouraging the members of each of the congregations in discipleship.
- **Collaborative** in nature - working well with the Ministry Team, lay and ordained, within the Ministry Area and is a good team player
- **Committed** to and understanding of the special nature of rural ministry with a passion to serve these communities and farming networks.

You will.....

- have a genuine passion for working with others, lay and ordained, in building the Kingdom of God.
- possibly be looking for your first team vicar post and the opportunity to develop your pastoral skills and try out new ways of being a priest amongst the people of God.
- be excited by working within a new team of laity and clergy and celebrating our diversity and differences.
- be comfortable with differing liturgical styles and willing to try new things.

We will.....

- pray with you and for you.
- offer you whatever support we can.
- we will respect your time off and holidays.
- help you make your house a home, and to keep it that way.
- pay your expenses promptly and fully.
- work with you to develop the Team and its cohesion.



Above all we promise to love you and your family as you become new members of our church family.

Our Diocese

Welcome to the Diocese of Monmouth, the Church in Wales in south-east Wales! We are here to share the Good News of Jesus Christ with our local communities.

The Diocese takes its name from the county town of Monmouthshire, which sits on the border between Wales and England. It largely covers the former county of Gwent, now incorporating Monmouthshire, Newport, Torfaen, Blaenau Gwent and part of Caerphilly County Boroughs, as well as the eastern reaches of Cardiff.

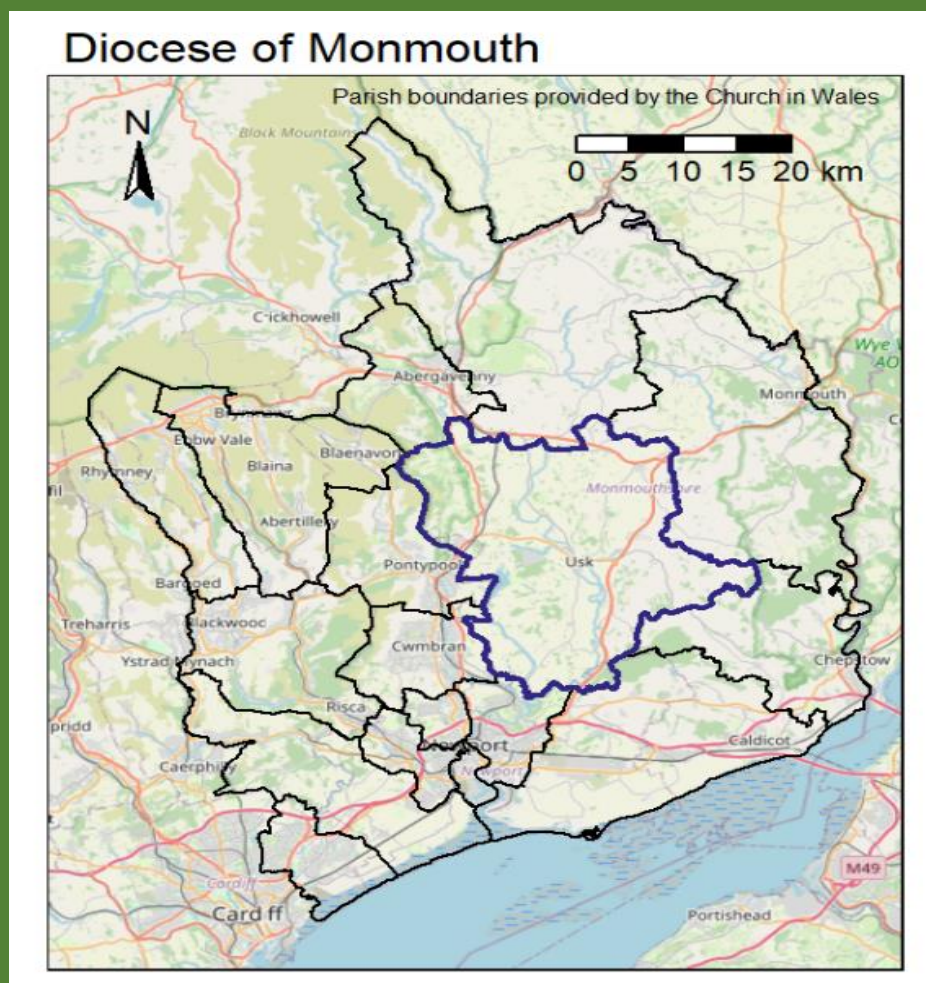


As a church family,

- We are small and close knit, inclusive, tolerant and innovative.
- We are committed to Mission and Evangelism and work consciously for the fulfilment of the God-given potential of every person.
- We strive to be inclusive, engaging, inspiring and accessible.
- We are seeking continually to discern and follow wherever the Spirit is leading.
- We look to work in partnership with others to serve God's world and all God's people.
- We strive to develop a culture that enables us to be fit for purpose in the 21st Century.

There's massive potential in this diocese; in our churches and parishes, in our schools and ministry areas. Why? Because they're made up of people; people created by God and made in his image, and because, through His power at work within us, He is able to accomplish abundantly far more than all we can ask or imagine.

We firmly believe that God can and does use each one of us to work out his loving purposes; transforming our doubts and fears and mistakes, sometimes in spite of us.

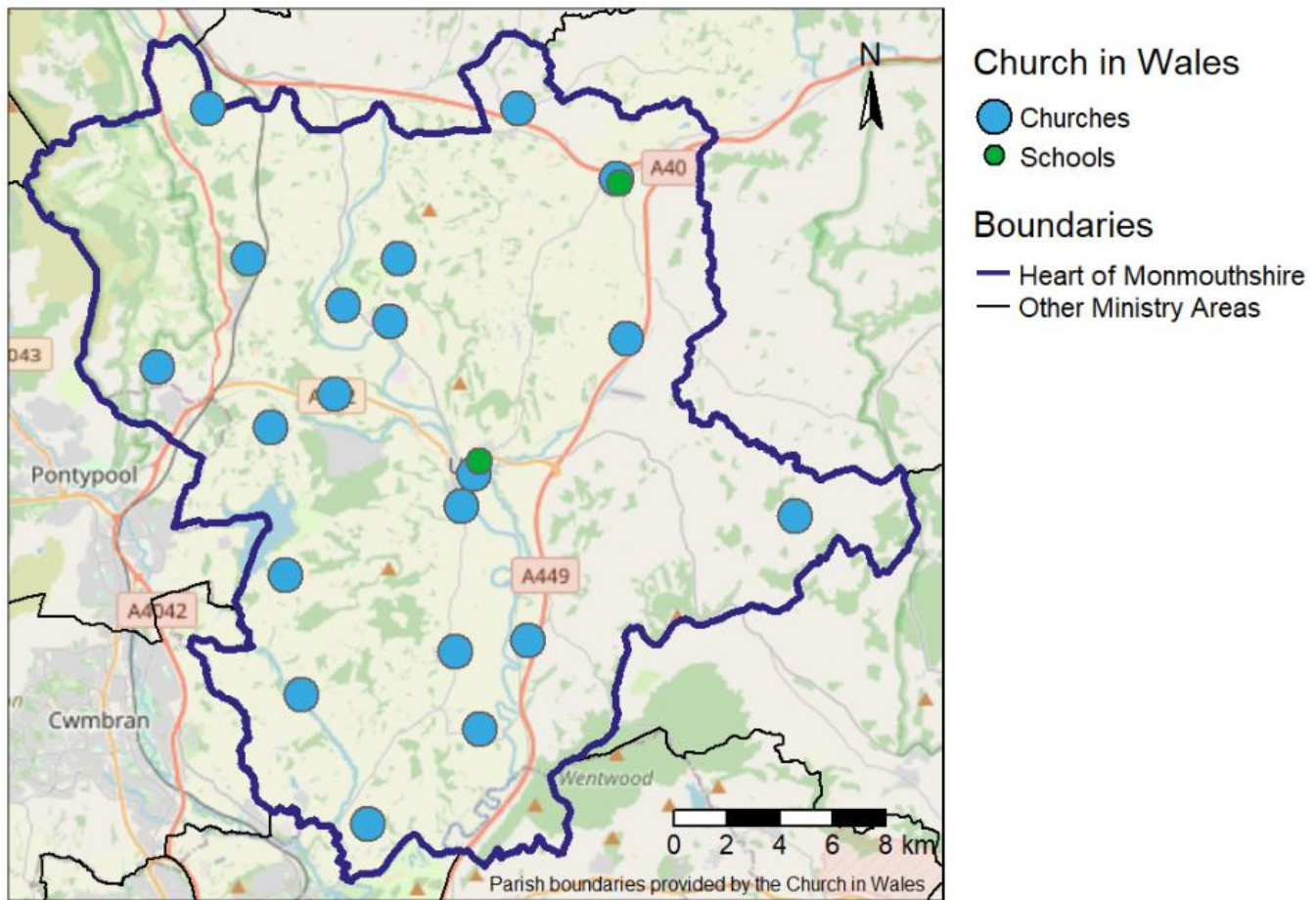


The Diocese has three archdeaconries and sixteen Ministry Areas. Each Ministry Area is co-terminus with the Deanery and we are the Deanery and Ministry Area of the Heart of Monmouthshire in the Archdeaconry of Monmouth.

Although we are proud of our Welsh heritage and our liturgy is produced in both English and Welsh, it is not a requirement to speak Welsh, although tuition is available to those who wish to learn.

The Ministry Area

Heart of Monmouthshire



A Ministry Area can be thought of as similar as a Rectorial Benefice and in essence is a group of worshipping communities served by a team of collaborating lay licensed and ordained ministers. Led by a Ministry Area Leader sharing resources and working together in their common life of faith and worship, witness and service.

The Heart of Monmouthshire Ministry Area was formed in early 2022 from three existing Ministry Areas to be a larger, more sustainable unit. We have twenty open church buildings in the Ministry Area ranging from very small, isolated buildings, to three or four larger ones situated in bigger villages and our towns. We also have a number of buildings in the care of the Friends of Friendless Churches Trust, most with churchyards still in use.

Our Ministry Area stretches from just south of Abergavenny down the Usk Valley to just north of Newport, reaching to Llandegfedd (and the reservoir) in the West and Wolvesnewton (and the fringes of Wentwood) in the East.

Both the Usk Showground and the Monmouthshire Livestock Market are in our area and we have keen ministries to both, so, a mature understanding and a passion for the special nature and needs of rural ministry and the ability to guide and develop these are essential, together with a willingness to engage with the wider Ministry Area.

In 2020 Monmouthshire was the second happiest place to live in Wales in Rightmove's annual Happy at Home survey which gauged a range of factors from how friendly the neighbours are and how good the local services are, to the sense of belonging and the quality of nature and green spaces in the area.

If there's one thing that sets Monmouthshire apart as a top Welsh tourism destination - it's an endlessly varied and vibrant culinary scene. Monmouthshire easily lives up to its billing as the 'Food Capital of Wales'. Not content with hosting the UK's largest annual food festival in nearby Abergavenny there are a host of local producers with an ever-expanding list of independent bakeries, breweries, distilleries and even the odd meadery.

Although the area is predominately rural there is easy access to the main motorway, road and rail links into England and more deeply into Wales, and the area is well served with a wide range of health, leisure and educational amenities. We think Monmouthshire is a great place to live and work, and you will enjoy being part of our welcoming community.



Our new Team Vicar

We seek a prayerful pastor of spiritual maturity to minister to the churches and closely knit rural communities of this beautiful part of the Heart of Monmouthshire Ministry Area.

Our aim is for each church to retain its local identity by having a 'focal minister' who may be ordained or lay, and we are developing a model whereby half of the stipendiary clergy time is given to Ministry Area-wide responsibilities with the other half for local initiatives and pastoral care and support to those specific communities that look to each cleric for ongoing ministry.

You will be the named priest for a number of worshipping communities in the North-West part of the Ministry Area, based in Goetre, but also fulfil a wider role across the whole Ministry Area which you and we will discern together, as we learn and get to know each other and understand our collective skills, callings and passions.

You will be a key member of the Ministry Team for the wider Ministry Area and an ex-officio member of the Ministry Area Council (PCC) and will be expected to share in presiding across the Ministry Area.

As such you would also be expected to work alongside the Team Rector, another Team Vicar, two Team Curates, a Lay Reader and lay and clerical colleagues (including a small number of retired priests with permission to officiate).

We feel strongly that ministering to a rural community is different from serving in an urban area. Many in the community see the church as their church, even if they only attend on 'high days and holy days.' Clergy, therefore, need to be an integral part of the community, and their ministry is to both the church and non-church in the community.

The Rectory

Was built in 1990 and is situated a few minutes walk from St Peter's Church, Goetre. With four bedrooms, one with en-suite facilities, a family bathroom and a ground floor toilet and washbasin adjacent to a self-contained study, the house has a separate sitting room and dining room with sliding doors opening onto the rear garden.



The well-appointed kitchen is adjacent to a utility room with its own sink and access directly into the garden. There is a single detached garage with parking for 3-4 vehicles. Central heating is oil-fuelled with the tank and a septic tank being situated at the rear of the property. Surrounded by mature gardens the property is in a peaceful and quiet area overlooking fields and the distant Monmouthshire hills. Council Tax, water rates and expenses of Ministry will be paid in full.

The Communities

Goetre - from a small village of two or three hundred inhabitants in the 1950s Goetre has developed to its present size as a result of a substantial building programme where the majority of homes have been built in the last 50 years. The village has a public house, post office, shop, and doctors surgery, The modern village hall and social club is also the venue for our fortnightly Well-Being Café which is proving increasingly popular and supported by church members and the Hall Committee.



Lack of local employment means that most residents commute outside the area. A large number of young families reside in the village and there is a good balance between the various age groups and secondary education is provided at King Henry VIII comprehensive school in Abergavenny and Caerleon comprehensive. Both schools have an excellent reputation.

Llanover is mostly owned by the local private estate. At one time the majority of the residents were employed by the estate, but now many of the properties are rented to tenants. Although some estate workers live in the village, jobs are hard to find locally, some of the tenancies are only short term so their involvement with the community is limited.

There is a public house in upper Llanover, the Goose and Cuckoo. A thriving village hall, with a social club and many other activities, is situated in the centre of the village.

Llanover has a 15-acre garden and art pottery and is open to the public once a year with the National Garden Scheme. Members of St Bartholomew's provide homemade cakes and tea for this event.



Mamhilad - St Illtud's Church is situated on the Old Abergavenny Road. It is a small parish church with its origins in the 11th century. Renovations took place in the 19th century and again in 2000 and is a Grade II* listed building. Opposite the church is The Star public house and just a short walk away is the Brecon and Monmouth canal.



The churchyard boasts eight yew trees which are a great source of interest to people visiting the church and were growing before the time of Jesus and have witnessed centuries of change in this quiet corner of Monmouthshire,



MONKSWOOD is a dispersed rural community stretching along the A472 and its many adjacent lanes in an area of rolling farmland and woodland. St Matthew's church and the Glascoed pub are the only community buildings, so nearby Usk and Goytre provide the local facilities.

GLASCOED is sometimes synonymous with the former Royal Ordnance Factory, now BAE Systems which employs around 500 people, many from the local area. Glascoed village is a quiet residential area stretching towards Llandegfedd Reservoir and Woodlake Park Golf Club. The community has two places of worship: St Michael's church and Zion Baptist Chapel. The Glascoed pub was the former ROF social club, and it now serves the wider community.

Since its foundation, Glascoed church has been the daughter church of Monkswood though the parish never had its own priest. It was served by Usk for many years, before being combined with Mamhilad and then the other churches in the area.



We hope you will prayerfully consider joining us as we grow together. We believe Monmouthshire is an exciting place to be, and a place where God is working in new ways to build His Church and leading us to serve our communities.

We welcome all enquiries and if you would like to meet us, or discuss this wonderful opportunity to be part of our team more fully, please do get in touch. We are looking forward to meeting you.

FOR MORE INFORMATION

To discuss the role or learn more about us please contact the Rector/Ministry Area Leader: Rev'd Kevin Hasler by email kevinhasler@cinw.org or telephone 078 3679 5753.

Thank you.

